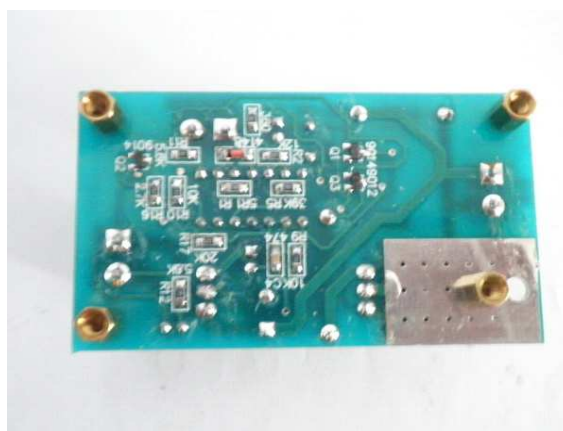


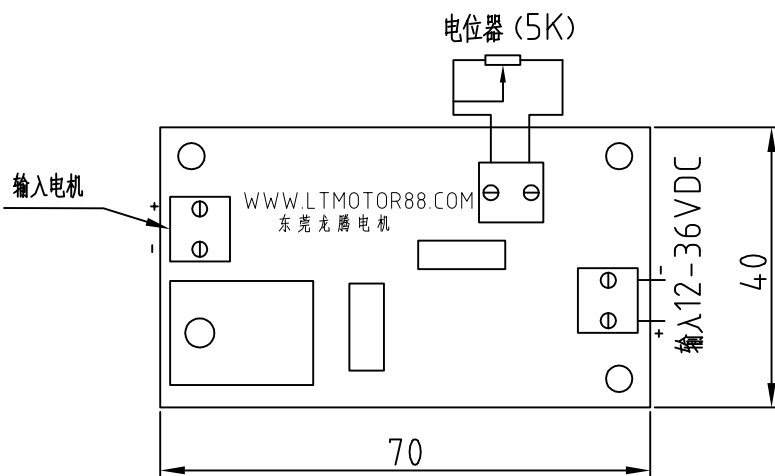
LT-DC-TS

1. 输入电压要求: 12V - 36VDC
2. 输出功率最大: 60W
3. 电流最大3A, 过载短路保护电流3A, 短路时间不超过60秒。
4. 脉宽调制范围: 5% - 95%
5. 尺寸: 70*40MM(或60*40MM)

东莞龙腾电机~~~微小动力, 带动您的梦想!



外形尺寸图 DIMENSION



scale:1:1

注: 1. 以上减速马达扭力值及转速值为计算参考值仅供参考.

THE ELECTRIC SPEED VALUE OF THE GEARED MOTOR IS TORQUE VALUE AND FIXED REFERENCE VALUE.

2. 除目录参数外, 我司可根据特殊规格设计开发. WE ACCEPT SPECIAL DESIGN AND ORDERS EXCEPT STANDARD PRODUCTS